



# Gender & Climate Justice

Understanding the Links

# Gender & Climate Justice 101

- ❖ **WHY** are people impacted differently by climate change?
- ❖ **WHAT** is climate justice?
- ❖ **HOW** are feminist organizing around climate action?



Climate change is  
*already* impacting  
communities.





# Climate change has a human face





WHY are people impacted  
*differently* by climate change?

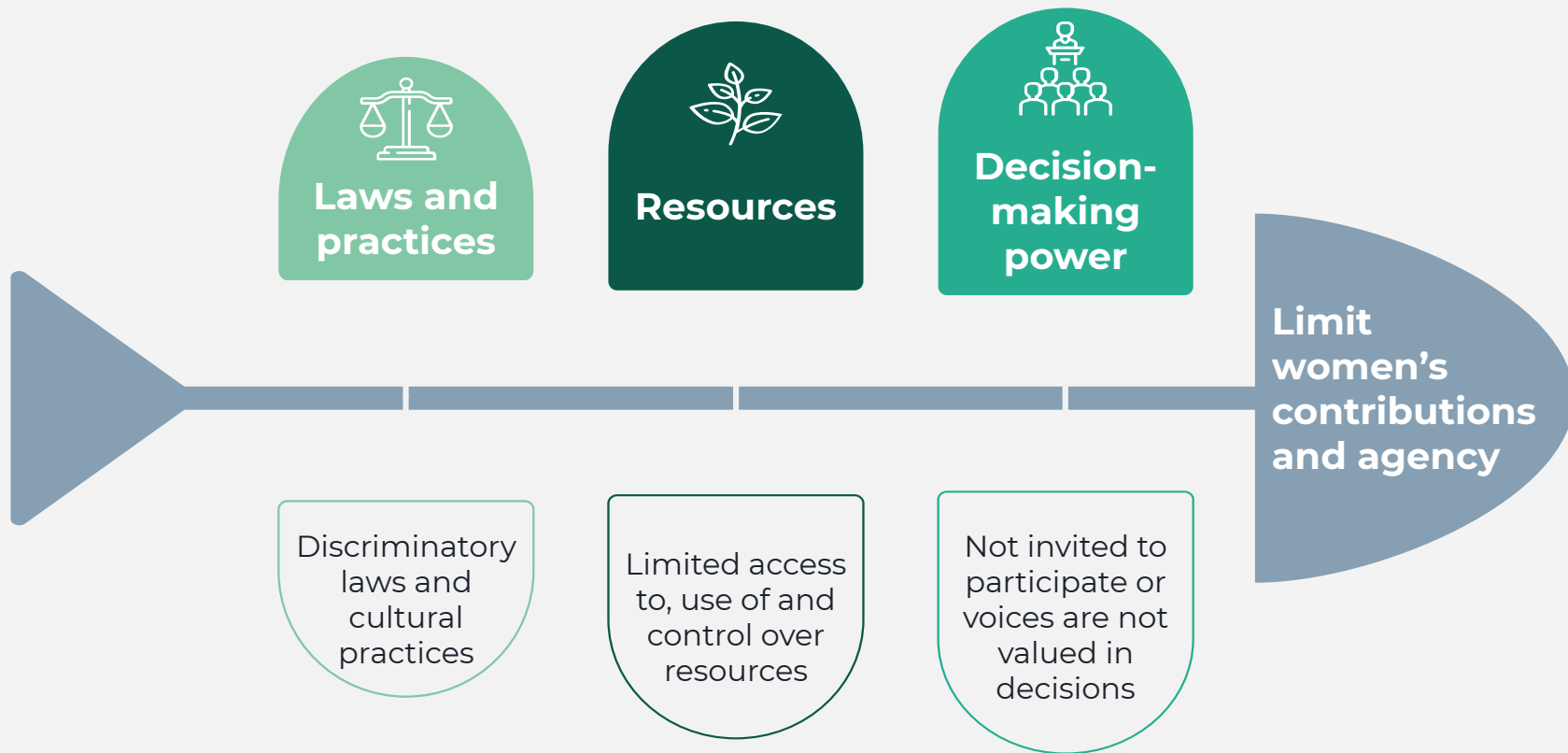


# *Climate change exacerbates existing inequalities*

- Of the **1.3 billion people** living in the deepest levels poverty worldwide, the **majority are women** (~70%)
- Women work **2/3rd's** of the world's hours
- Women produce **1/2** the world's food; in rural areas, women produce 60-80% of staple crops
- And yet, women **earn only 10%** of the world's income and **lack rights to own land** in 90 countries.



# Inequality



**"There is no such thing as a single-issue struggle,  
because we do not live single-issue lives."**

**- Audre Lorde**

### **Inner circle:**

Unique circumstances and experiences

### **Second circle:**

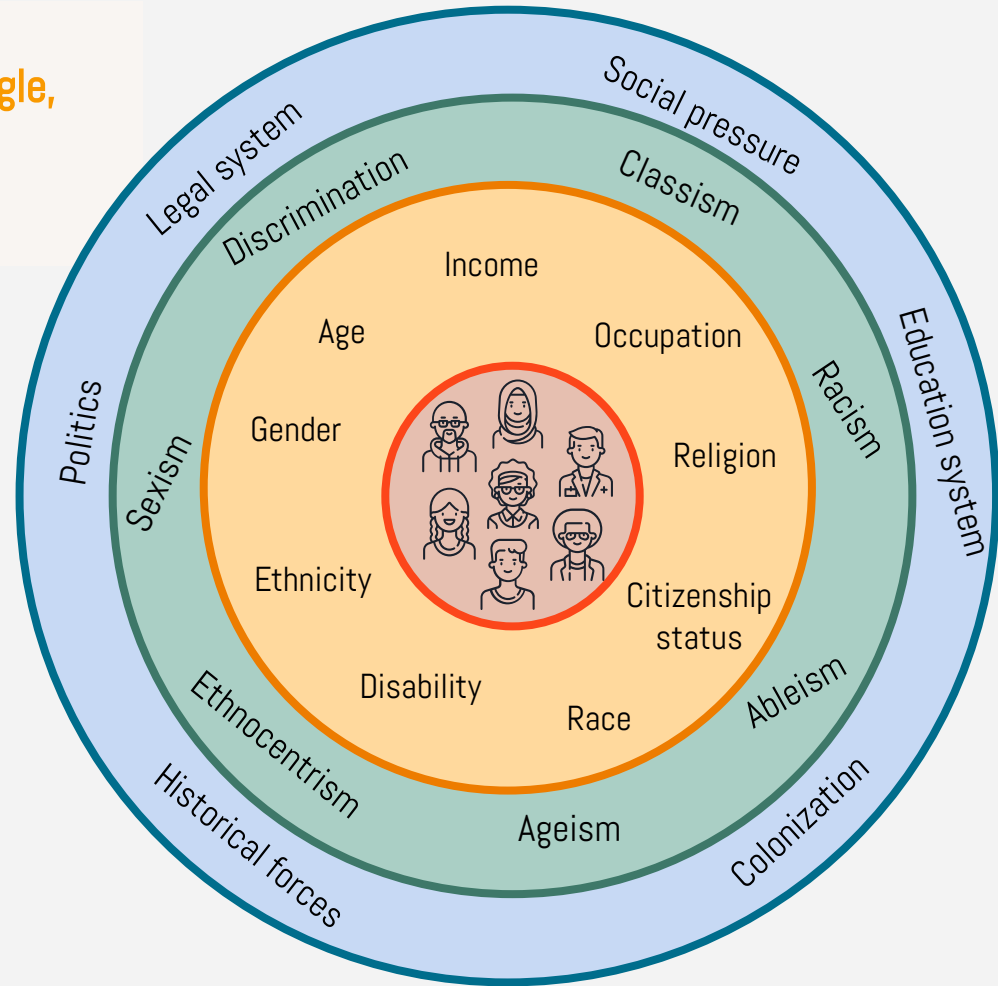
Aspects of identity

### **Third circle:**

Types of discrimination impacting  
identity

### **Outer circle:**

Larger forces and structures  
reinforcing exclusion





Gender and Climate Change  
in the United States: A  
Reading of Existing Research



PHOTO CREDIT: PHOTO 159243541 © YVONNE STEWART - DREAMSTIME.COM

PUBLISHED MARCH 2020 IN PARTNERSHIP WITH:



# Research in the U.S.

- Women make up only 19% of people interviewed, featured, or quoted in climate-related news coverage
- Men represent approximately 72% of workers in energy and fuels production. This includes workers in fields adversely affected by decarbonization efforts, such as coal, natural gas, and petroleum, as well as sectors benefiting from decarbonization, including wind and solar.
- Women are more likely than men to need to visit the ER for asthma- and respiratory-related conditions during wildfires
- Experiencing extreme weather events is associated with greater risks of low birth weight and preterm births



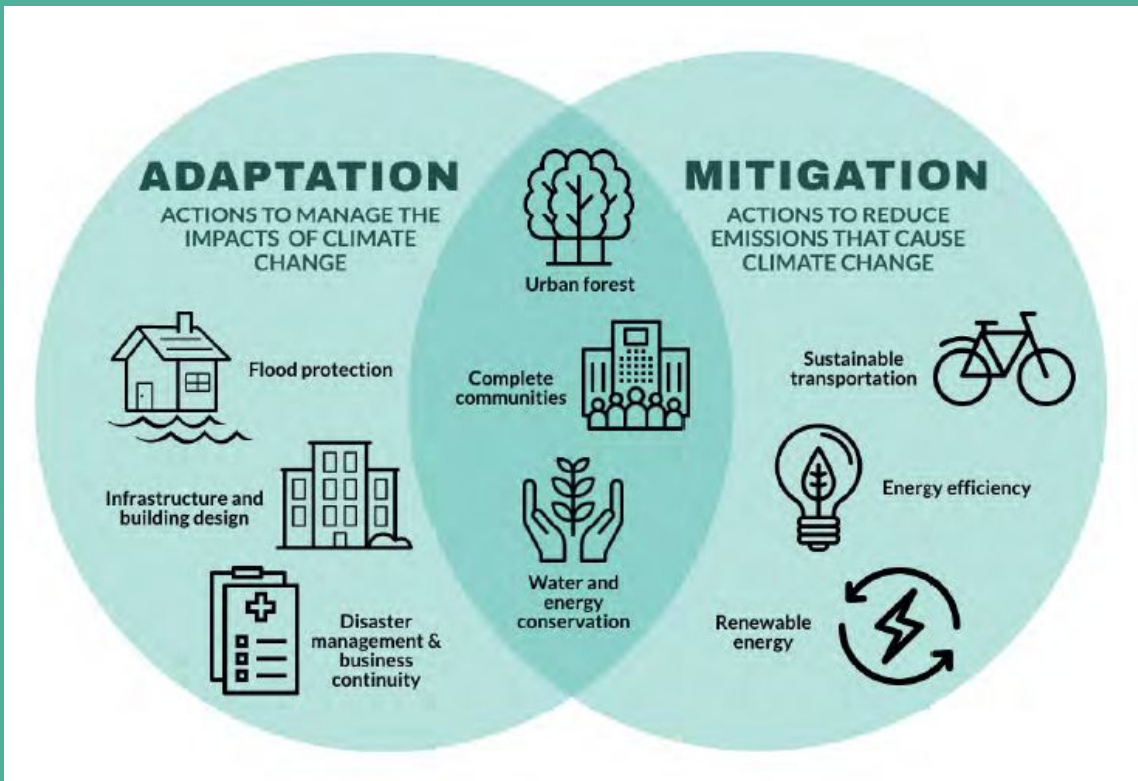
We may be  
weathering  
the same  
storm, but  
we are not  
in the same  
boat



**WHAT** is climate justice?



# EQUITY



# JUSTICE

# CLIMATE JUSTICE

- Recognizes key groups are differently affected by climate change.
- Acknowledges that climate is also a racial (& gender) justice problem.
- Names that those most impacted by climate have been least responsible for its causes.
- Advocates for a world in which fairness, equity and ecological rootedness are core values.
- Focuses on solutions that are systemic, people-centered, equitable, and transformational - lead by the groups most impacted.









# PRINCIPLES

- REQUIRE INTERSECTIONAL GENDER ANALYSIS ACROSS ALL ACTIONS
- RECOGNIZE THERE IS NO SUCH THING AS DOMESTIC CLIMATE POLICY
- CONFRONT INSTITUTIONAL PATRIARCHY & RACISM
- CENTER INDIGENOUS PEOPLES' RIGHTS & LEADERSHIP
- SYSTEMICALLY CONFRONT EXPLOITING & UNSUSTAINABLE PRODUCTION PRACTICES
- ADVANCE REPRODUCTIVE JUSTICE
- ENSURE DEMOCRATICALLY CONTROLLED COMMUNITY-LED SOLUTIONS
- REJECT FALSE & HARMFUL RESPONSES TO CLIMATE CHANGE THAT FAIL TO ADDRESS ROOT CAUSES
- CREATE REGENERATIVE ECONOMIES THAT CENTER SYSTEMIC FEMINIST INTERSECTIONAL LEADERSHIP
- RESPECT THE LEADERSHIP OF YOUNG PEOPLE AS THEY WANT TO MOVE FORWARD

WORKING TOWARDS JUSTICE

at all the ENVIRONMENTAL MOVEMENT COALITIONS

DIFFERENT COALITIONS

AND SUPPORTING PARTNERS

BIG T BURNS - MED

WHAT DOES  
LOOK LIKE TO  
BEING AN  
REGIONAL  
ANALYST  
CRISIS  
ARE FACING  
RIGHT NOW?

[illegible]

The diagram features a central red circle containing the text "WHAT WOULD A POLICY RESPONSE TO THE PANDEMIC ROOTED IN AN ETHIC OF CARE FOR PEOPLE & PLANET LOOK LIKE?". To the left, a vertical stack of words reads "DIA", "DUARTE.", "MADRE.". Above the central circle, a black box contains the text "FEMINIST GREEN NEW DEAL" with a large arrow pointing down towards it labeled "THROUGH A". Below the central circle, two dark blue circles are connected by a red banner. The top blue circle says "CLIMATE" and the bottom one says "COVID-19". The banner between them reads "FOR CRISIS? WHO NOW WILL SHAPE LIFE FOR YEARS". To the right of the central circle, there is a small illustration of a person's head and shoulders, and a red speech bubble with the word "TO GAME". Various other elements like a magnifying glass, a pencil, and a book titled "WOMEN'S HISTORY" are scattered around the diagram.

WHAT IS THE INTERCONNECTEDNESS OF CRISIS & STRUGGLE IN THIS MOMENT?

TARA HUSK

COVID-19 COLLECTIVE.

ARE WORK

CENTRAL E GIVING LOW CARBON

RIGHT NOW, PEOPLE HAVE AN APPETITE FOR TRANSFORMATIVE SOLUTIONS... LETS PUT THEM ON THE TABLE!

LEARN COURAGES FOR LOCAL PEOPLE

INVEST IN ORGANIZING OF GRASSROOT WOMEN IN GLOBAL SOUTH

WE CANNOT GO TO WAR, F...

Q: WHAT IS MOST IMPORTANT

PEOPLE OR PROFIT?

WERE SEEING TEARS IN THE FABRIC

THE HEALTH OF THE LAND & PEOPLE ARE 1

WE NEED CARE

VEN METAPHORICALLY!

WOMEN AND DEFENDERS  
CRIMINALIZED & TARGETED

WOMEN & FAMILIES ART TARGETED FOR THEIR DISSANT

RIGHTS OF NATURE  
LEGAL FRAMEWORK

WHAT ABOUT

1970s - 80s

COVID-19

GROWING COLLECTIVE.

TARA HOSKARI

WHAT IS THE INTERCONNECTEDNESS of UPRIGIST Struggle IN THIS MOMENT?

WHAT IS MOST IMPORTANT? PEOPLE OR PROFIT?

WERE WE SEEING TEARS IN THE FABRIC?

THE HEALTH OF THE LAND & PEOPLE ARE 1

RIGHT NOW, PEOPLE HAVE AN APP, TRANSPORT



WE  
NEED  
CARE

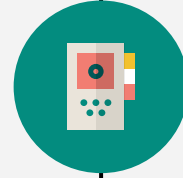
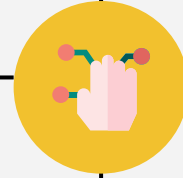
PEOPLE

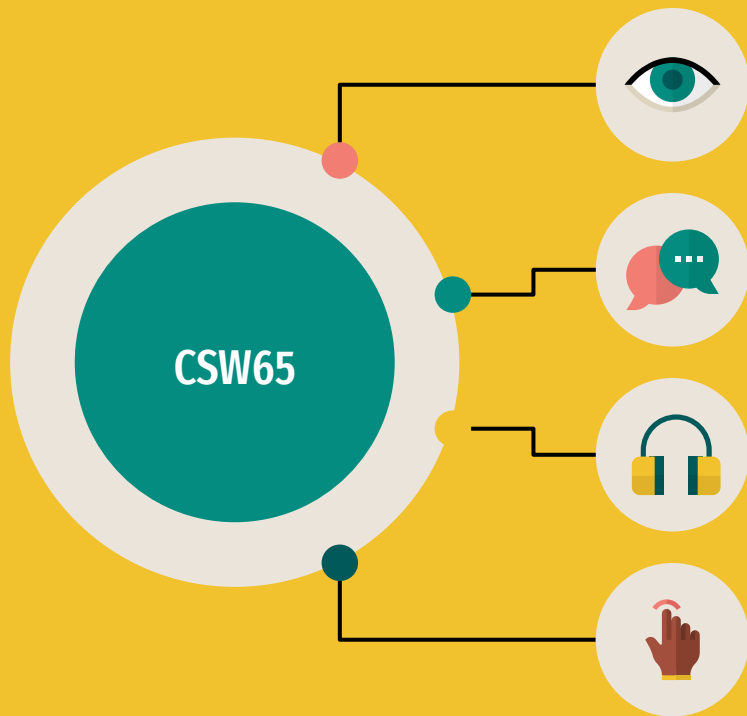
INVEST IN ORGANIZING IN GRASSROOTS WOMEN IN GUARD SOUTH

WE CANNOT GO TO WAR, EVEN METAPHORICALLY!

WE NEED CARE

# COP26 Glasgow: Success or Failure?





Urgency

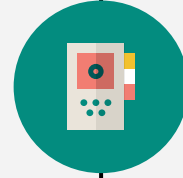
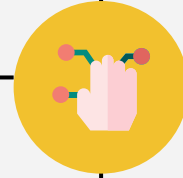
Developed vs  
Developing

Finance

Loss & Damage



# COP26 Glasgow: Success or Failure?



# Climate change is cross-cutting... and so is gender



**Policy/reform**



**Agriculture/food security**



**Water**



**Disaster risk reduction**



**Energy**



**Forests**



**Waste/recycling**



**Cities/urban**

Additional  
reflections?

